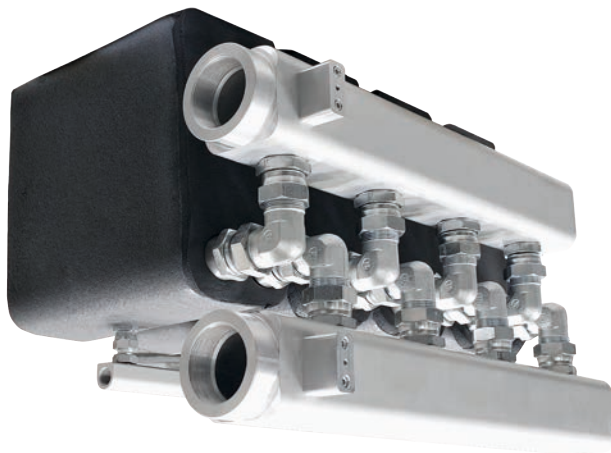


## ► MK HP HIGH PRESSURE SERIES

COMPRESSED AIR DRYERS ◀

This design achieves a hyper-efficient 100% contact between the air and refrigerant circuits, delivering state-of-the-art performance and great cooling efficiency.

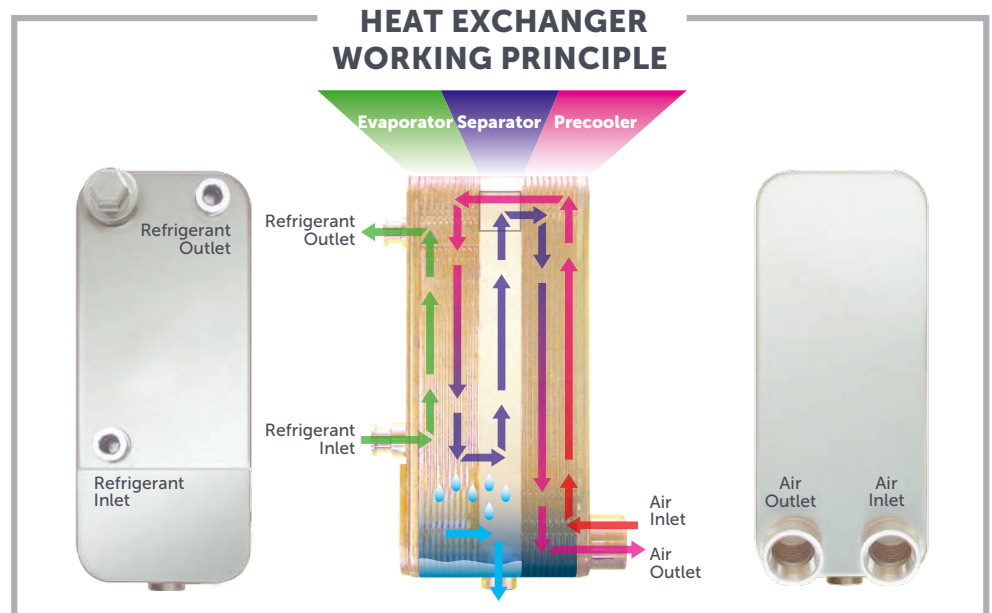
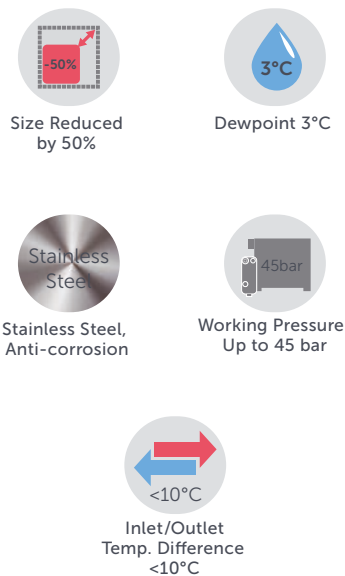
The state-of-the-art 3-in-1 design features very low differential pressure delivering significant energy savings. The 3-in-1 Heat-Exchanger is compact and allows the dryer to be smaller and reduces the space required for the dryer. Drytec offers a variety of 3-in-1 dryers equipped with the 3-in-1 Heat-Exchanger to meet a full range of capacity and power requirements.



40 bar



Drytec High Pressure Dryers have stainless steel brazed plate heat exchangers.



Drytec MK-HP range High Pressure Air Dryer Series have state of the art stainless steel brazed plate heat exchanger. It is designed for high pressure air dryers. The heat exchanger has the following sections in one module;

- Air/Air heat exchanger (Economizer)
- Air/Refrigerant heat exchanger (Evaporator)
- Water separator

With reliable stainless steel and optimized efficiency design, Drytec MK-HP heat exchangers supply size reduction, anti corrosion and great heat transfer.

## The Separator Efficiency

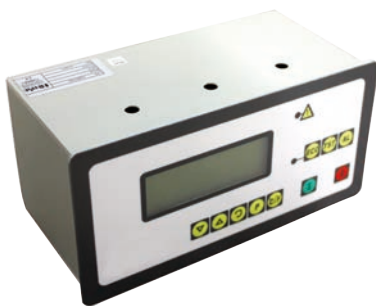
- Double centrifugation due to the bottom fin
- Reserved direction for the compressed air
- Gravity effect to the condensed water
- Special anti-return system
- Separator integrated to the system

## Frigorific Circuit

- Two valve regulation system (thermal and by-pass), allowing to fill properly the exchanger and giving a max. temperature to the exchanger
- High quality security test of potential leakage
- Use of hermetic compressor as standard
- High quality, long lasting components
- Quick start and reaction time

## Scroll Compressor

- Better coefficient of power
- Less energy consumption
- Higher resistance to liquid shocks



## Technical Specifications

| Model      | Flow* (m <sup>3</sup> /h) | Voltage      | Inlet - Outlet Connection Size | Max. Working Pressure (bar) | Max. Ambient Temp. (°C) | Max. Inlet Temp. (°C) | Width (mm) | Lenght (mm) | Height (mm) | Weight (kg) |
|------------|---------------------------|--------------|--------------------------------|-----------------------------|-------------------------|-----------------------|------------|-------------|-------------|-------------|
| MK HP 50   | 50                        | 230V/1/50 Hz | 3/4"                           | 45                          | 45                      | 50                    | 361        | 454         | 553         | 36          |
| MK HP 90   | 90                        | 230V/1/50 Hz | 3/4"                           | 45                          | 45                      | 50                    | 361        | 454         | 553         | 38          |
| MK HP 150  | 150                       | 230V/1/50 Hz | 3/4"                           | 45                          | 45                      | 50                    | 401        | 453         | 623         | 45          |
| MK HP 220  | 220                       | 230V/1/50 Hz | 3/4"                           | 45                          | 45                      | 50                    | 401        | 453         | 623         | 45          |
| MK HP 300  | 300                       | 230V/1/50 Hz | 1 1/4"                         | 45                          | 45                      | 50                    | 451        | 505         | 761         | 70          |
| MK HP 400  | 400                       | 230V/1/50 Hz | 1 1/4"                         | 45                          | 45                      | 50                    | 451        | 505         | 761         | 72          |
| MK HP 500  | 500                       | 230V/1/50 Hz | 1 1/4"                         | 45                          | 45                      | 50                    | 451        | 505         | 812         | 78          |
| MK HP 575  | 575                       | 230V/1/50 Hz | 1 1/4"                         | 45                          | 45                      | 50                    | 451        | 505         | 812         | 80          |
| MK HP 775  | 775                       | 230V/1/50 Hz | 1 1/4"                         | 45                          | 45                      | 50                    | 501        | 675         | 984         | 115         |
| MK HP 910  | 910                       | 230V/1/50 Hz | 1 1/4"                         | 45                          | 45                      | 50                    | 501        | 675         | 984         | 120         |
| MK HP 1000 | 1000                      | 230V/1/50 Hz | 2"                             | 45                          | 45                      | 50                    | 727        | 947         | 1170        | 218         |
| MK HP 1160 | 1160                      | 230V/1/50 Hz | 2"                             | 45                          | 45                      | 50                    | 727        | 947         | 1170        | 220         |
| MK HP 1500 | 1500                      | 230V/1/50 Hz | 2"                             | 45                          | 45                      | 50                    | 727        | 947         | 1170        | 225         |
| MK HP 1600 | 1600                      | 400V/3/50 Hz | 2"                             | 45                          | 45                      | 50                    | 797        | 947         | 1460        | 263         |
| MK HP 1800 | 1800                      | 400V/3/50 Hz | 2"                             | 45                          | 45                      | 50                    | 797        | 947         | 1460        | 265         |
| MK HP 2200 | 2200                      | 400V/3/50 Hz | 2 1/2"                         | 45                          | 45                      | 50                    | 797        | 1162        | 1495        | 352         |
| MK HP 2500 | 2500                      | 400V/3/50 Hz | 2 1/2"                         | 45                          | 45                      | 50                    | 797        | 1162        | 1495        | 353         |
| MK HP 2700 | 2700                      | 400V/3/50 Hz | 2 1/2"                         | 45                          | 45                      | 50                    | 797        | 1162        | 1495        | 355         |
| MK HP 3000 | 3000                      | 400V/3/50 Hz | 2 1/2"                         | 45                          | 45                      | 50                    | 797        | 1162        | 1495        | 422         |
| MK HP 3300 | 3300                      | 400V/3/50 Hz | 2 1/2"                         | 45                          | 45                      | 50                    | 797        | 1162        | 1495        | 423         |
| MK HP 3600 | 3600                      | 400V/3/50 Hz | 2 1/2"                         | 45                          | 45                      | 50                    | 797        | 1162        | 1495        | 425         |

\* Nominal flow is calculated at the following conditions: Inlet Pressure: 40 bar, Inlet Temperature: 35°C  
Ambient Temperature 25°C for other conditions please refer to the correction factor table.

## Correction Factor for MK HP High Pressure Series

| Pressure (bar) | F1   | Inlet Temp. (°C) | F2   | Ambient Temp. (°C) | F3   |
|----------------|------|------------------|------|--------------------|------|
| 20             | 0.84 | -                | -    | -                  | -    |
| 25             | 0.91 | -                | -    | -                  | -    |
| 30             | 0.93 | -                | -    | -                  | -    |
| 35             | 0.96 | -                | -    | -                  | -    |
| 40             | 1    | 35               | 1    | 25                 | 1    |
| 45             | 1.02 | 40               | 0.85 | 30                 | 0.93 |
| -              | -    | 45               | 0.72 | 35                 | 0.87 |
| -              | -    | 50               | 0.63 | 40                 | 0.82 |
| -              | -    | -                | -    | 45                 | 0.79 |

For maximum flow rate, multiply model flow rate show in the table below by the correction factor corresponding to the working pressure.

|                                   |
|-----------------------------------|
| Maximum Pressure (45 bar)         |
| Nominal Working Pressure (40 bar) |
| Refrigerant: R134a                |